



CHAPTER HOUSE LANE

## *Exhibition proposals*

Thanks for your interest in working with Chapter House Lane. This document outlines how to propose an exhibition and how we select artists. We recommend you read our website to find out about our past exhibitions and who we are as an organisation.

### **Sending a proposal**

To propose an exhibition, introduce your art practice to our committee by sending the following to [info@chapterhouselane.org.au](mailto:info@chapterhouselane.org.au):

- a link to images of your work online
- a link to your profile online
- a short biography or CV (in the email).

Please don't send attachments within the email.

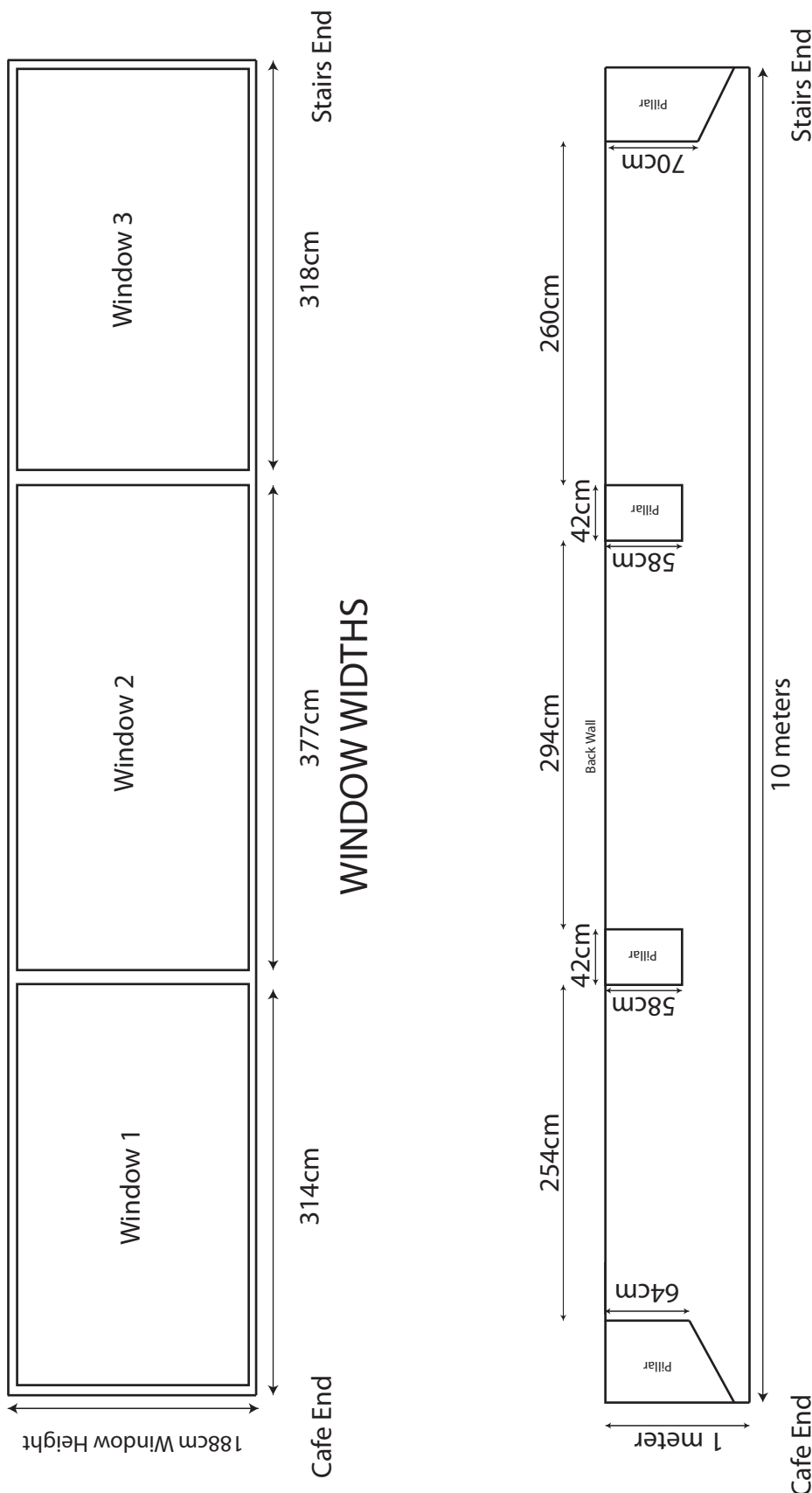
### **Artist selection**

Artists will be approached by invitation, with preference given to unrepresented contemporary artists with around five years' exhibition history. Our exhibitors are selected on their capacity to respond to our unique location, direction and motivation, which are outlined in the section below. We aim to exhibit new works by emerging and mid-career artists working across a range of media.

What are we drawn to? Well-resolved ideas are encouraged, as are artists who display dedication to their practice, explore the potential of traditional forms and methods, and/or wish to explore new facets of their work.

We value a sense of openness, authenticity and social engagement. Our aim is to foster creative work, bringing a diversity of contemporary art to the public and inspiring curiosity and amusement in our patrons and passers-by.

We look forward to hearing from you. Please see our floor plan on the next page.



**FLOOR PLAN**

